

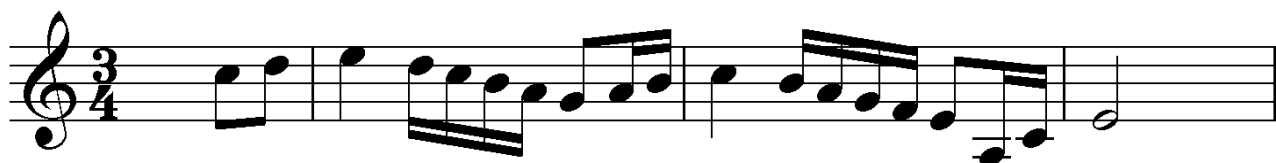
## Time Signatures Preliminary Exercises : Answers

1. Add time signatures to the following extracts

1.1



1.2



1.3



1.4



1.5



1.6

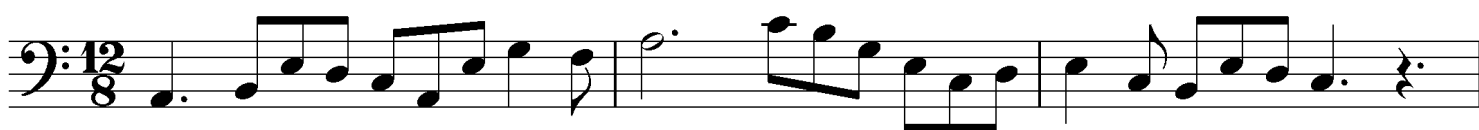


## Time Signatures Preliminary Exercises : Answers

1.7



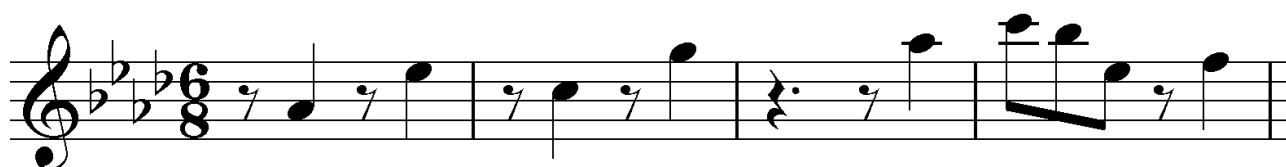
1.8



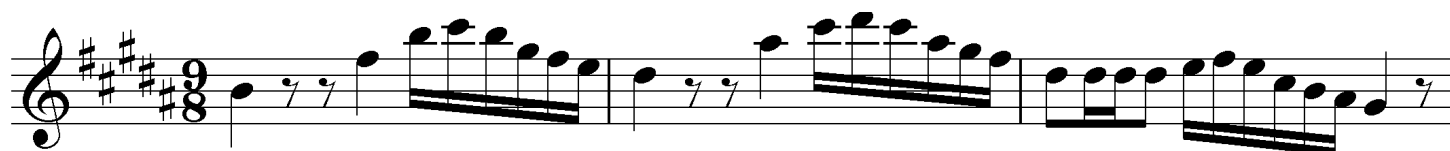
1.9



1.10



1.11



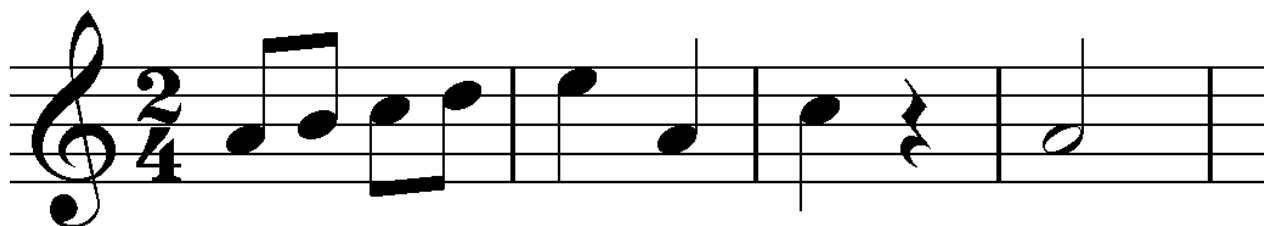
1.12



## Time Signatures Preliminary Exercises : Answers

2. Add bar-lines to the following extracts. All begin on the first beat of the bar

2.1



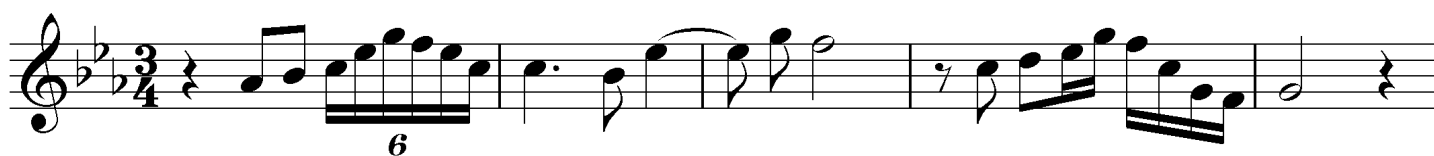
2.2



2.3



2.4



2.5

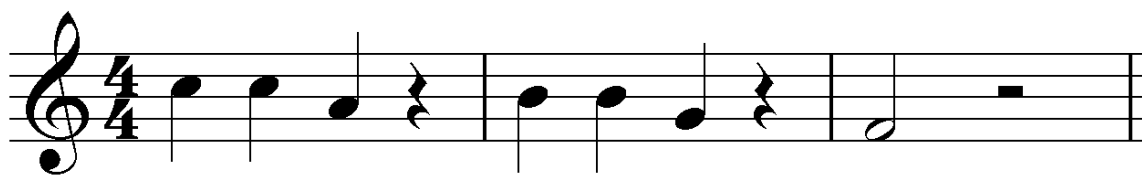


2.6

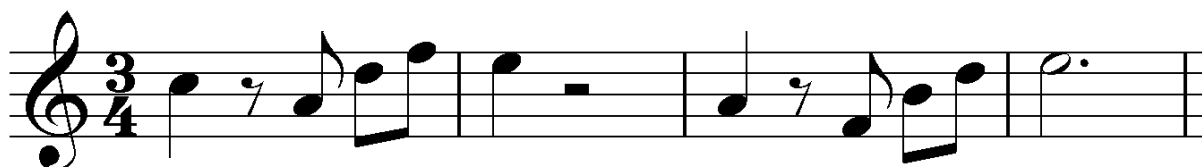




## Time Signatures Preliminary Exercises : Answers



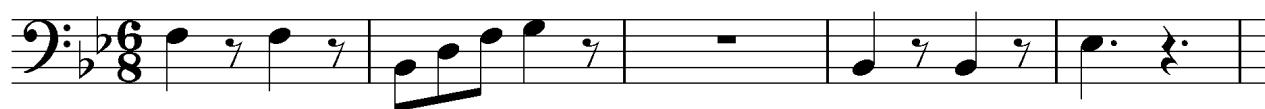
3.2



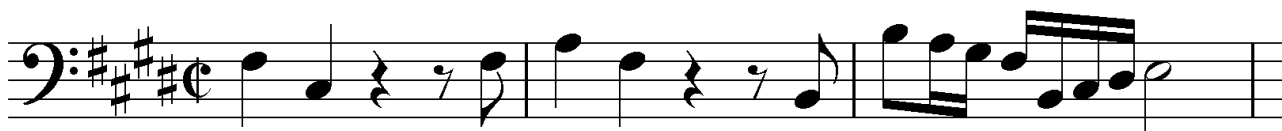
3.3



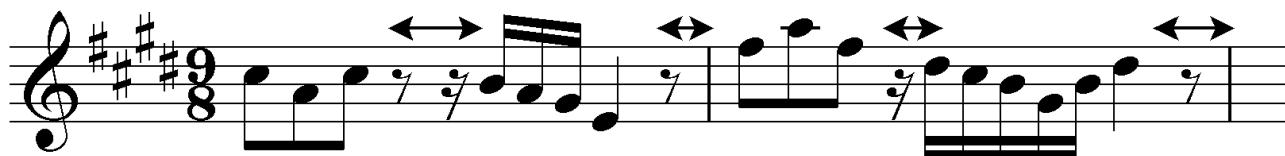
3.4



3.5



3.6



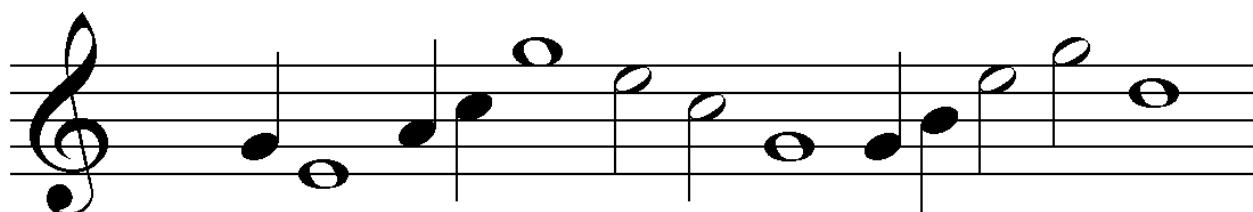


## Time Signatures Preliminary Exercises : Answers

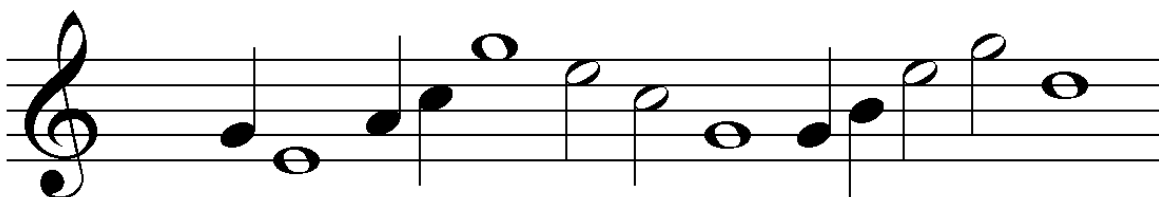
### Tie lines

Add bar and tie lines to the following extracts and complete the final bar with rests if needed  
Rearrange other rests and beaming if necessary.

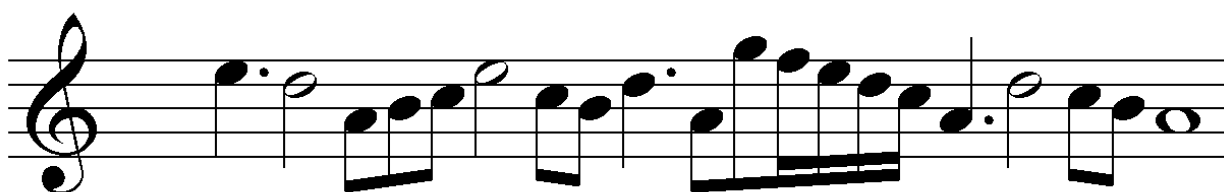
4.1



4.2



4.3



## Time Signatures Preliminary Exercises : Answers

4.4

Exercise 4.4 consists of two staves of music in bass clef. The key signature has three sharps (F#, C#, G#). The first staff is in 4/4 time and contains a sequence of notes: a dotted quarter note, an eighth note, a quarter note, a half note, a quarter note, an eighth note, and a dotted quarter note. The second staff is in 9/8 time and contains a sequence of notes: a quarter note, an eighth note, a quarter note, a half note, a quarter note, a dotted quarter note, an eighth note, a quarter note, and a dotted quarter note.

4.5

Exercise 4.5 consists of two staves of music in bass clef. The key signature has three sharps (F#, C#, G#). The first staff is in 4/4 time and contains a sequence of notes: a quarter note, a half note, a quarter note, a half note, a quarter note, and a dotted quarter note. The second staff is in 3/8 time and contains a sequence of notes: a quarter note, an eighth note, a quarter note, a dotted quarter note, a quarter note, an eighth note, a quarter note, and a dotted quarter note.



## Time Signatures Preliminary Exercises : Answers

### 5. Compound $\leftarrow \rightarrow$ Simple Time

5.1

Exercise 5.1 consists of two staves of music. The top staff is in 2/4 time, and the bottom staff is in 6/8 time. Both staves share a key signature of one flat (B-flat). The melody in both staves is identical, starting with a half note B-flat, followed by a quarter note G, a quarter note F, and a quarter note E. This is followed by a quarter rest, then a quarter note D, a quarter note C, and a quarter note B-flat. The piece concludes with a half note B-flat. The 6/8 staff includes a triplet of eighth notes (G, F, E) and a triplet of eighth notes (D, C, B-flat) in the second measure, and a triplet of eighth notes (D, C, B-flat) in the fourth measure.

5.2

Exercise 5.2 consists of two staves of music. The top staff is in 6/8 time, and the bottom staff is in 2/4 time. Both staves share a key signature of one flat (B-flat). The melody in both staves is identical, starting with a half note B-flat, followed by a quarter note G, a quarter note F, and a quarter note E. This is followed by a quarter rest, then a quarter note D, a quarter note C, and a quarter note B-flat. The piece concludes with a half note B-flat. The 2/4 staff includes a triplet of eighth notes (G, F, E) and a triplet of eighth notes (D, C, B-flat) in the second measure, and a triplet of eighth notes (D, C, B-flat) in the fourth measure.

5.3

Exercise 5.3 consists of two staves of music. The top staff is in 3/4 time, and the bottom staff is in 9/8 time. Both staves share a key signature of three sharps (F#, C#, G#). The melody in both staves is identical, starting with a half note F#, followed by a quarter note G#, a quarter note A, and a quarter note B. This is followed by a quarter rest, then a quarter note C, a quarter note B, and a quarter note A. The piece concludes with a half note G#. The 9/8 staff includes a triplet of eighth notes (G#, A, B) and a triplet of eighth notes (C, B, A) in the second measure, and a triplet of eighth notes (C, B, A) in the fourth measure.

## Time Signatures Preliminary Exercises : Answers

5.4



5.5

